



SLM GROUP™

ON TIME, ON CALL, ON TASK

Company Introduction



A Message from our CEO

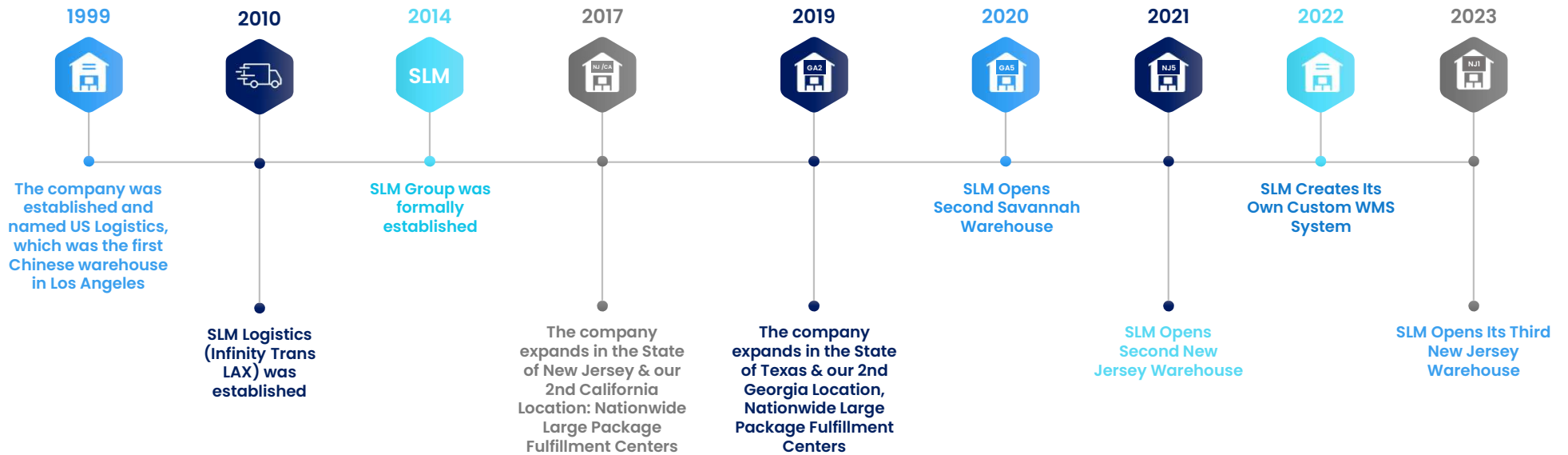
In the 21st century, companies such as Amazon, Alibaba and JD.com dominated the rapidly developing e-Commerce ecosystem. In 2015 Walmart, Wayfair, Target and other leading companies also joined this trend which quickly promoted the development of cross-border e-Commerce trade. As a result, a flood of Asian products made in China poured into the American market, This led to China's cross-border e-commerce retail market that reached \$78.5 billion in 2016. Furthermore,

China's cross-border e-Commerce retail market grew to \$134.7 billion in 2018. With this opportunity, SLM Group also began to develop cross-border Nationwide Large Package Fulfillment Centers and defined its core mission as:

Under the premise of complying with national laws and regulations, using the best logistic method to deliver the best and cheapest Asian products to US consumers.

- Mark Chen

SLM Company History



SLM Group Business Structure



Core Services

Nationwide Large Package Fulfillment

Core Competencies



Fast



Precise



What makes SLMW fast?

SLMW is focused on fulfilling services in multiple cities to ensure that end consumers receive orders as quickly as possible.

Orders placed before 8am will be processed on the same day.

Everyday before 12pm, Amazon's SFP shipment will be processed same day.

Current operational capability ensures that more than 10,000 large parcels are delivered on time everyday.



What makes SLMW precise?



Our contract error rate is 0.1%, which is lower than the market error rate.



SLMW's advanced technology ensures our low error rate.



Current warehouse error rate is 0.05%



Our daily fulfillment rate is 100%.



Our SFP's current execution rate is 100%.



SLMW uses a comprehensive Warehouse Management System [WMS].



Core Services

Nationwide SFP Service

- SLM will cut off the order twice on the same day, at 8:00 am and 12:00 pm, which can better guarantee the delivery
- Each warehouse is equipped with FedEx scanning guns, and the package will have the first scan on the same day, and customers can upload it to their e-commerce platform as soon as possible.
- SLM has 5 years of service experience in operating SFP, among which 40% of our customers use SFP service, and sales orders have increased by 60%-70%.

SLMW Data Analysis: East Coast

Customer placed an order on January 15th, SLM shipped the same day and delivered the package January 17th.

Shipment facts

Shipment overview

TRACKING NUMBER	393452597364
MASTER TRACKING NUMBER	393452596910
SHIP DATE ?	1/16/23
STANDARD TRANSIT ?	1/17/23
ACTUAL DELIVERY ?	1/17/23 at 1:55 pm

Services

SERVICE	FedEx Home Delivery
TERMS	Third Party

Package details

WEIGHT	45 lbs / 20.41 kgs
DIMENSIONS	47x24x14 in.
TOTAL PIECES	2
TOTAL SHIPMENT WEIGHT	116 lbs / 52.62 kgs
PACKAGING	Package

SLMW Data Analysis: Southern Coast

Customer placed an order on January 16th, SLM shipped the same day and delivered the package January 19th.

Shipment facts

Shipment overview

TRACKING NUMBER	393452605296
SHIP DATE 	1/16/23
STANDARD TRANSIT 	1/19/23
ACTUAL DELIVERY 	1/19/23 at 12:53 pm

Services







SERVICE	FedEx Ground
TERMS	Shipper

Package details

WEIGHT	83.3 lbs / 37.78 kgs
TOTAL PIECES	1
PACKAGING	Package

SLMW Data Analysis: West Coast

Customer placed an order on January 16th, SLM shipped the same day and delivered the package January 19th.

Shipment facts	
 Shipment overview	
TRACKING NUMBER	393446757842
SHIP DATE 	1/16/23
STANDARD TRANSIT 	1/20/23
ACTUAL DELIVERY 	1/19/23 at 1:41 pm
 Services	
SERVICE	FedEx Home Delivery
TERMS	Shipper
 Package details	
WEIGHT	24.1 lbs / 10.93 kgs
DIMENSIONS	23x22x10 in.
TOTAL PIECES	1
PACKAGING	Package

SLM Warehouse Distribution Rapid Expansion

SLMW Warehouse Locations



These warehouses cover 90% of Amazon PRIME consumers in the United States.

SLM Enterprise Value



Customer First



Employee Second



Community Third



Shareholder Fourth



SLM Charity Donations

For the 2022 year SLM has donated a total of \$120,000 towards Charities across the nation!

SLM has hand picked local charities and allowed all SLM Members to vote for their charity of choice.

Instead of choosing the charities with the most votes, we wanted to donate to each Foundation depending on how many votes were given to a selected Charity.

Therefore, each SLM Member vote has been accounted for and made a difference to the charities they have personally voted for! Each SLM Members votes count! Below is the list of Charities and amounts donated!

2022 Donations List

Mt. Sac Foundation

Meals on Wheels

Sheriffs Youth Foundation

Ronald McDonald House Charities

Fank Callen Boys & Girls Club

Med Bank Foundation

Bianca's Kids

Ronald McDonald House - Southern New Jersey

Ranchero Relaro

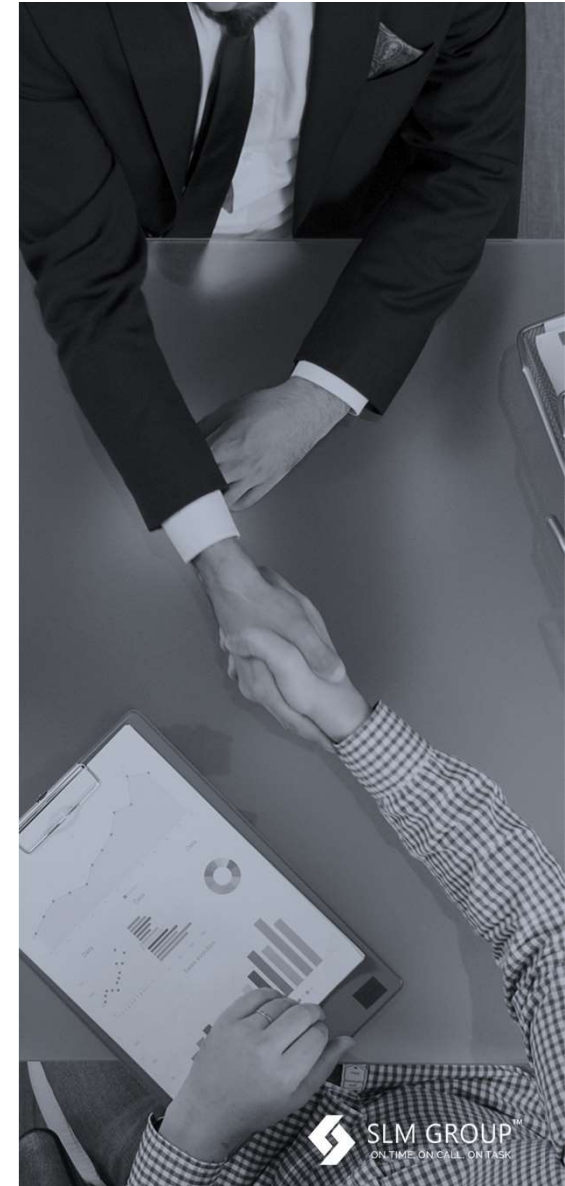
Sunshine Kids Foundation

Houston SPCA

SLMW Partners:



We also deliver to **Amazon, Wayfair, Wish, Ebay, Walmart, Home Depot, Overstock, Lowe's**





SLM GROUP™
ON TIME. ON CALL. ON TASK

Thank you!